

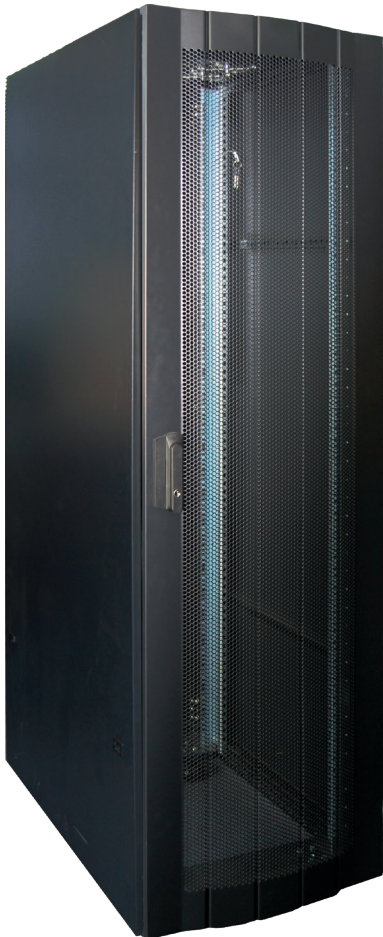
ST SERIES 19" NETWORK SERVER CABINETS - 600 WIDE

DESCRIPTION

Step up your networking game with the DYNAMIX Network Cabinet. Thoughtfully designed for modern requirements, it's more than just a safe storage space for your equipment. Crafted from high-quality SPCC cold roll steel, ensuring durability & longevity. Boasting a gloss black powder-coated finish, this cabinet seamlessly complements any professional environment. Equipped with lockable doors for added security & removable side panels for easy maintenance.

Need to transport or store? No problem! Our cabinet also comes in a convenient flat pack option for hassle-free mobility.

Whether you're revamping your office space or setting up a new network station, the DYNAMIX Network Cabinet promises performance wrapped in elegance.



FEATURES

- Supplied with fixed shelves, fans, cage nuts, castors & levelling feet
- Static loading: 1500kg
- Width: 600mm
- Depth: 900mm, 1000mm, 1200mm
- Removable one piece side panels
- Double pipe profile frame connected by "3T" system
- Front door hinged on right side
- Front & rear doors are lockable
- Front & rear doors can be opened to 130°
- Vertical mounting profile can be adjusted in 25mm increments
- Optional plinths available to bolt cabinet to floor
- Optional side vertical cable tray available
- Optional baying kit available for cabinet interconnection (RABST)
- Mounting profile 2.0mm, mounting angle 1.5mm, others 1.2mm
- Supplied complete or in fast assembly flat pack format (FP codes)
- Gloss black colour & easy clean surface
- Material: SPCC quality cold rolled steel
- Finish: Degreasing, acid pickling, phosphoric cleaning, powder coated
- Complies with IEC-60297, ANSI/EIA RS-310-D, IEC297-2, DIN41491; PART1, DIN41494; PART7, GB/T3047.2-92, IP20 rated
- 2 Year Warranty on cabinet. Subject to use within the static loading specifications & operation within normal environmental conditions
- 1 Year Warranty on fans



Optional plinth available to bolt cabinet to floor



MODEL CODE	W X D X H* (EXTERNAL)	HEIGHT	FIXED SHELVES	6-WAY PDU	DEFAULT RAIL DEPTH	M ³	kg
RST22-6X9	600 x 900 x 1281mm	22RU	1	1	600	0.88	118
RST22-6X9FP**	600 x 900 x 1281mm	22RU	1	1	600	0.40	120
RST27-6X9	600 x 900 x 1381mm	27RU	1	1	600	0.95	130
RST37-6X10	600 x 1000 x 1881mm	37RU	2	1	700	1.42	157
RST37-6X10FP**	600 x 1000 x 1881mm	37RU	2	1	700	0.57	161
RST42-6X8	600 x 800 x 2081mm	42RU	3	1	700	1.29	164
RST42-6X10	600 x 1000 x 2081mm	42RU	3	1	700	1.57	168
RST42-6X10FP**	600 x 1000 x 2081mm	42RU	3	1	700	0.74	175
RST45-6X10	600 x 1000 x 2181mm	45RU	3	1	700	1.57	176
RST45-6X10FP**	600 x 1000 x 2181mm	45RU	3	1	700	0.63	186
RST45-6X12	600 x 1200 x 2181mm	45RU	3	1	900	2.01	207

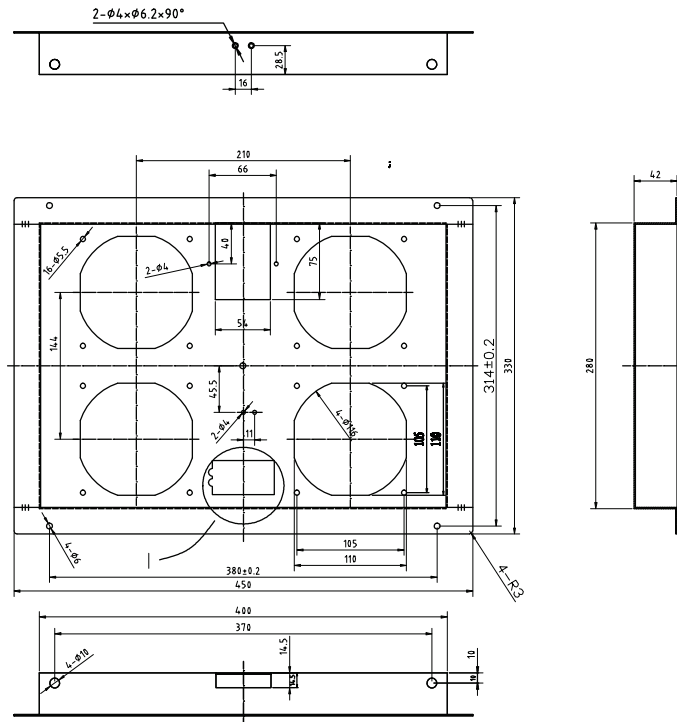
* Height includes castor wheels (90mm)

** FP = Flat Pack



DROP IN FAN KIT

DYNAMIX replacement drop in fan tray for ST Series cabinets. Includes thermostat feature



Please note we took the up-most care to compile the information in this datasheet. To the best of our knowledge all info provided were correct at the time of creation. Should any specs change we try to update info accordingly. Information are subject to change without notice. In the case that you find any irregularity please inform our team at contactus@dynamix.co.nz

Last updated: 9 October 2023

