

CVT-100 Series Media Converter



10/100BASE-TX to 100BASE-FX Standalone
Media Converter

Features

- **The World-wide Effortless and Reliable Media Converter**
The almost “set-it-and-forget-it” media converter is for minimizing network implementation and maintenance efforts
- **9K Bytes Jumbo Frame Size**
Support jumbo frame size 9K bytes to ease the network traffic loading and facilitate IPTV service
- **Link Alarm**
When UTP or fiber port is down during operation, the other port will be automatically turned off to alert the user
- **Fully Compatible with CVT-RACK-16**
Budget limited solution for CVT-Rack-16 to mix installation with CTS's non-managed converter

Target Applications

- **FTTx implementations. Point-to-point fiber connection for long distance.**

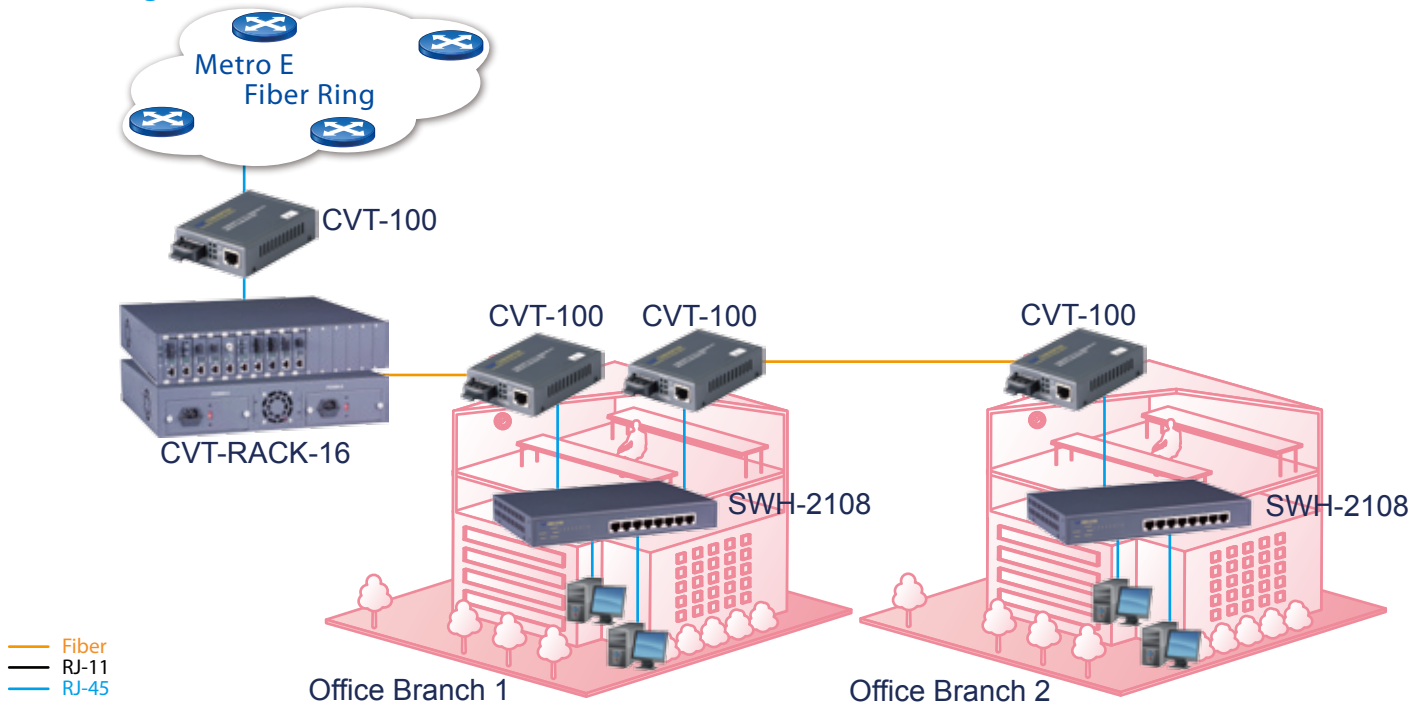
Description

Connection Technology Systems (CTS) CVT-100 series media converter are the Fast Ethernet 10/100Base-TX to 100Base-FX media converter. The CVT-100 series media converter converts traditional twisted-pair RJ45 cable into various fiber media including multi-mode, single-mode, SC/ST/MR connector, or bi-directional wdm. The traditional transmission distance of 100m over RJ45 copper can be extended from 2km to 100km over fiber.

CVT-100 series media converter is fully compliant with IEEE 802.3 & 802.3u standards. With the built-in switch ASIC chip, it has turned CVT-100 series to become more like a two-port switch rather than like an ordinary converter. User can get many switch benefits such as segmentation, frame checking and error filtering. Additionally, Link Alarm feature enables administrator to monitor the fiber link more easily.

The installation and operation are simple and straightforward. The operation status can be monitored through a set of diagnostic LED indicators on the front panel. It is especially designed for network operators, metro Ethernet providers, enterprises, SMB, who have the need of implementing fiber optical Ethernet networks over long distance, for FTTx solutions, and are looking for an effortless and reliable 100Mbps media converter.

Application Diagram



Specification

Interface

TP Port
10/100Base-TX RJ45 x 1
F/O Port
100Base-FX x 1

LED

Power, FDX, Status, Speed,
F/O Link/Act, TX Link/Act

Power Requirement

Power adaptor
- AC input: 100VAC~240VAC
- Frequency range: 50~60Hz
- DC output: 5V, 1.6A
Power Consumption: 2.5W

Standards

IEEE 802.3 10Base-T
IEEE 802.3u 100Base-TX/FX
IEEE 802.3x Flow Control

Ethernet Features

Support 9K Bytes jumbo frame
Support Flow Control

Environmental Condition

Operation: 0° ~ 50°C
Storage Temperature: -20° ~ 60°C
Humidity: 5% ~ 90%, non-condensing

H/W Specification

Store and forward switching mechanism
Auto-Cross over for MDI/MDI-X in TP port
Auto-Negotiation in TP port
Full/Half Duplex Mode Operation

Other Features

Rare Panel DIP Switch
Support slide-in Converter Center

Dimension & Weight

Size: 71 x 94 x 26 mm (WxDxH)
Shipping Weight: 0.6KG

EMC/Safety

FCC Class A, CE
* For further reports, please contact

Order Information

MODEL	FIBER PORT					TP PORT	
	Speed	Fiber Type	Connector	Distance	Ports	Speed	Ports
CVT-100BTFC	100	MM	SC	2KM	1	10/100	1
CVT-100BTFT	100	MM	ST	2KM	1	10/100	1
CVT-100BTFC(SM-30/50/60/80/100)	100	SM	SC	30/50/60/80/100KM	1	10/100	1
CVT-100BTFMR	100	MM	SC	2KM	1	10/100	1
CVT-100W2A(SM-20/40)	100	WDM	SC	20/40KM	1	10/100	1
CVT-100W2B(SM-20/40)	100	WDM	SC	20/40KM	1	10/100	1