

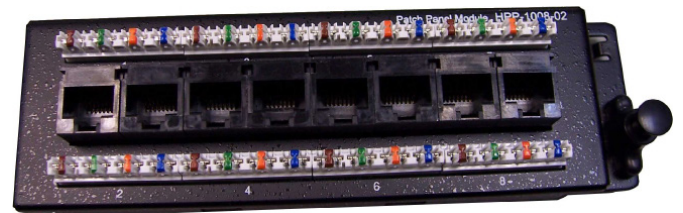
## PATCH PANEL MODULE

CODE: HPP-1008-1SL

The Patch Panel provides a network interface for local area network applications such as ISDN or DSL services and supports Cat5e performance. This module has eight 4 pair 110 IDC connectors and each of them connects to an individual RJ45 jack. The Ethernet Hub can be linked using a patch lead for high-speed network application.

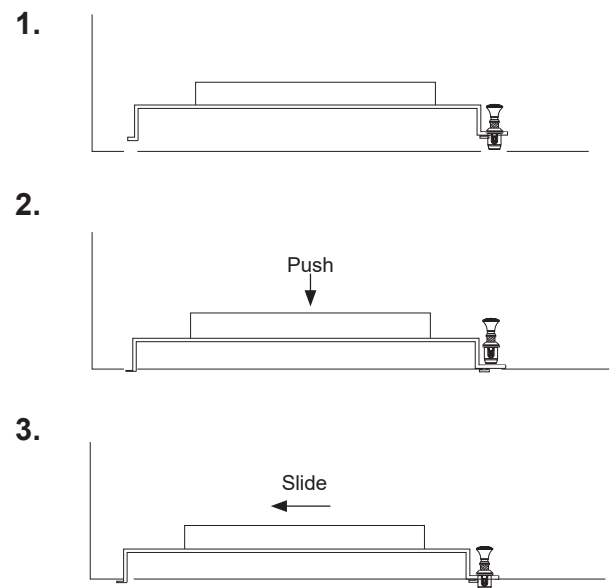
### Features

- Supports Cat5e performance
- 8x 4 pair 110 IDC connectors
- Dimensions: 48 x 157 x 21mm
- 1 year warranty



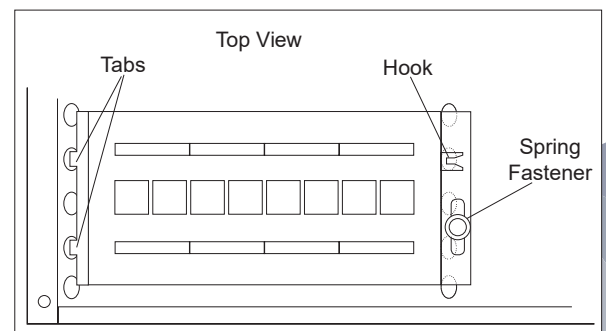
### Instructions

1. Place the module horizontally.
2. Push the module so the hook and tabs fall into the rail slots of the enclosure.
3. Slide the module LEFT and the spring fastener will automatically lock the module at the desired position.



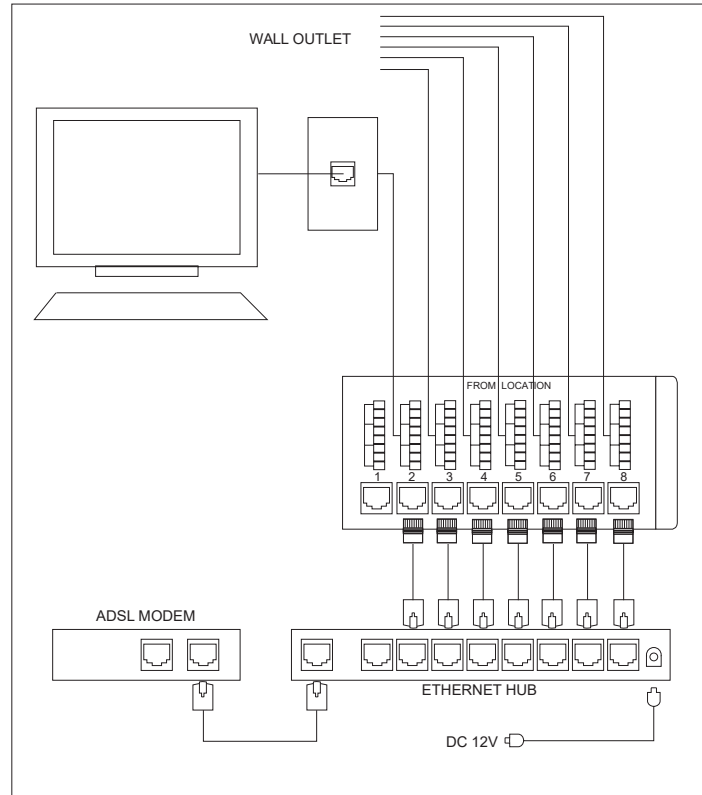
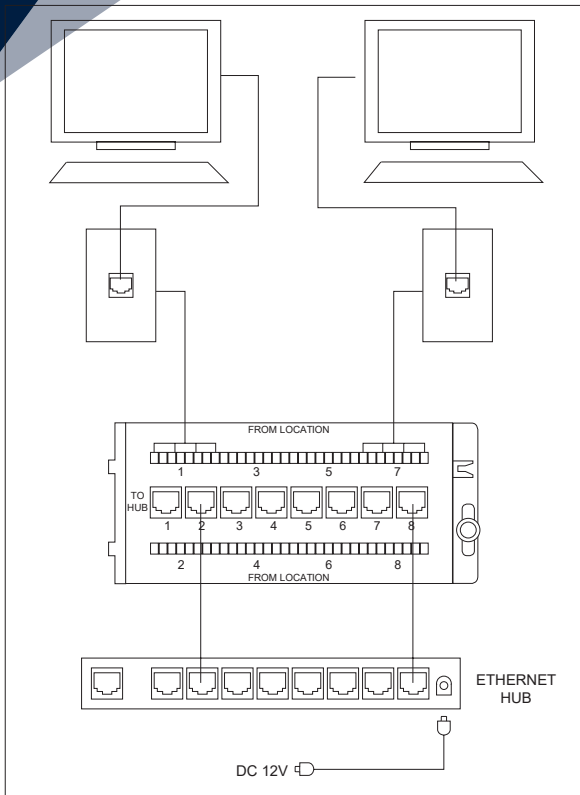
### Operations

Terminate the cables on the 4 pair 110 connectors of the data distribution module. Each Cat5e cable should be fully terminated on the contact blades. This module supports TIA T568B wiring standard and is capable of connecting 8 Cat5e cables. Identify which, port you want activated and connect one end of a patch lead to the corresponding jack and the other end to the Ethernet Hub.



## PATCH PANEL MODULE

CODE: HPP-1008-1SL



### Wire Installation

For 110 IDC connector, follow the wire colour-code and only use 110 punch down tool to push the wire between the contact blades. For RJ45 plug, follow the standard TIA T568B standard for wiring instructions.

### Wiring a 110 Connector

1. Strip 5cm of cable jacket.
2. Untwist about 10mm of wire and keep jack close to 110 connector.
3. According to the colour code, use only a 110 punch down tool to push the wire between the contact blades. The wire may be damaged if another tool is used.

