

CAT6/6A 180° UNSHIELDED KEYSTONE JACKS

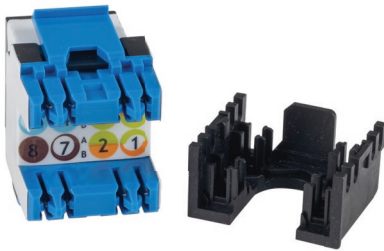
DESCRIPTION

The DYNAMIX Cat6/6A component compliant RJ45 180° unshielded keystone jacks are designed to easily snap in and out of the wall outlet, patch panel and surface mount box. The jacks are individually terminated using Insulation Displacement Connectors (IDC) with rapid punch down tool available for quick installation.

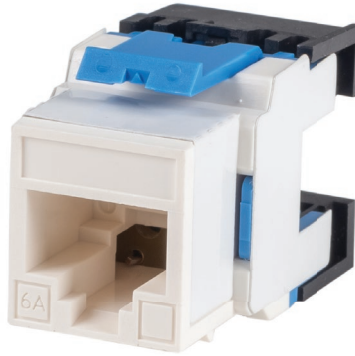
The unique design provides an efficient and effective method of reducing alien crosstalk from neighbouring connectors for superior performance.

FEATURES

- DYNAMIX keystone jacks meet and exceed performance levels for Cat6/6A
- Rapid Termination tool available (Purchased separately)
- Comes with T568A/T568B colour labelling
- Press-Fit Technology makes the product more reliable
- Hardware transmission performance edition 2.2 of ISO/IEC 11801, CENELEC 50173-1, and ANSI/TIA-568-C.2 for Return loss, Insertion loss, NEXT loss, FEXT loss, TCL, TCTL, PSANEXT loss, and PSAFEXT loss up to 500MHz
- A more stable transmission performance is guaranteed since there is no other medium that takes effect in between PCB and contacts
- Lifetime warranty



T568A/T568B Colour Label



White



Black

MODEL CODE	KEYSTONE JACKS	COLOUR
FP-C6-180BK	Cat6 180° Dual IDC	Black
FP-C6-180WH	Cat6 180° Dual IDC	White
FP-C6A-180BK	Cat6A 180° Dual IDC	Black
FP-C6A-180WH	Cat6A 180° Dual IDC	White
CT-RAP180V3	Rapid Termination Tool for FP-C6-180XX and FP-C6A-180XX Keystone Jack Series	Black/Pink

RAPID TERMINATION TOOL



Model: CT-RAP180V3

SPECIFICATIONS

Material	Housing	ABS UL94V-0 flame retardant
	Spring Wire	Phosphor bronze 0.35t, plated with 50u" gold at contact area over 60u" nickel undercoat
	PCB	FR4
	IDC Terminals	Phosphor bronze 0.5t, plated with 100u" nickel
	IDC Block	High-impact Polycarbonate UL94V-2 flame retardant
Solid Wire Range	Conductor Diameters	22AWG~24AWG
	Insulation Diameters	0.8mm~1.1mm
	Cable Diameters	5mm~9mm
Plug Insertion Life (Mating)	Plug Insertion Life (Mating)	
Plug and Jack Contact Force	Min. 100g Using FCC approved plug	
Plug Retention Force	Min. 30lbs	
Storage Temperature	-40°C~68°C	
Operating Temperature	-10°C~60°C	
Operating Humidity	10%~-90%RH	
Current Rating	1.5A	
Insulation Resistance	Min. 500mΩ	
Contact Resistance	Max. 20mΩ	
Transmission Performance	10GBase-T	
FCC	Part 68	
TIA/EIA	568-C.2	
UL	1863, ETL Certified, Supports PoE+, US PATENT	

ALSO AVAILABLE:

	<p>PL-AUGS-3</p> 	<p>PLS-C6-1.5</p> 	<p>PP-CM001</p> 
<p>PP-UKSTP-24RM 24 Port Unloaded 19" 1RU, STP Patch Panel, with rear cable management.</p>	<p>3m Cat6A Grey SFTP 10G Patch Lead. (Cat6 Augmented) 500MHz Slimline Moulding. Various length</p>	<p>1.5m Cat6A 10G Beige Slimline Component Level UTP Patch Lead (30AWG). Various lengths.</p>	<p>19" Cable Management Bar. Supplied with Cage Nuts. 70mm Deep</p>

Please note we took the up-most care to compile the information in this datasheet. To the best of our knowledge all info provided were correct at the time of creation. Should any specs change we try to update info accordingly. Information are subject to change without notice. In the case that you find any irregularity please inform our team at contactus@dynamix.co.nz

Last updated: 21 July 2023