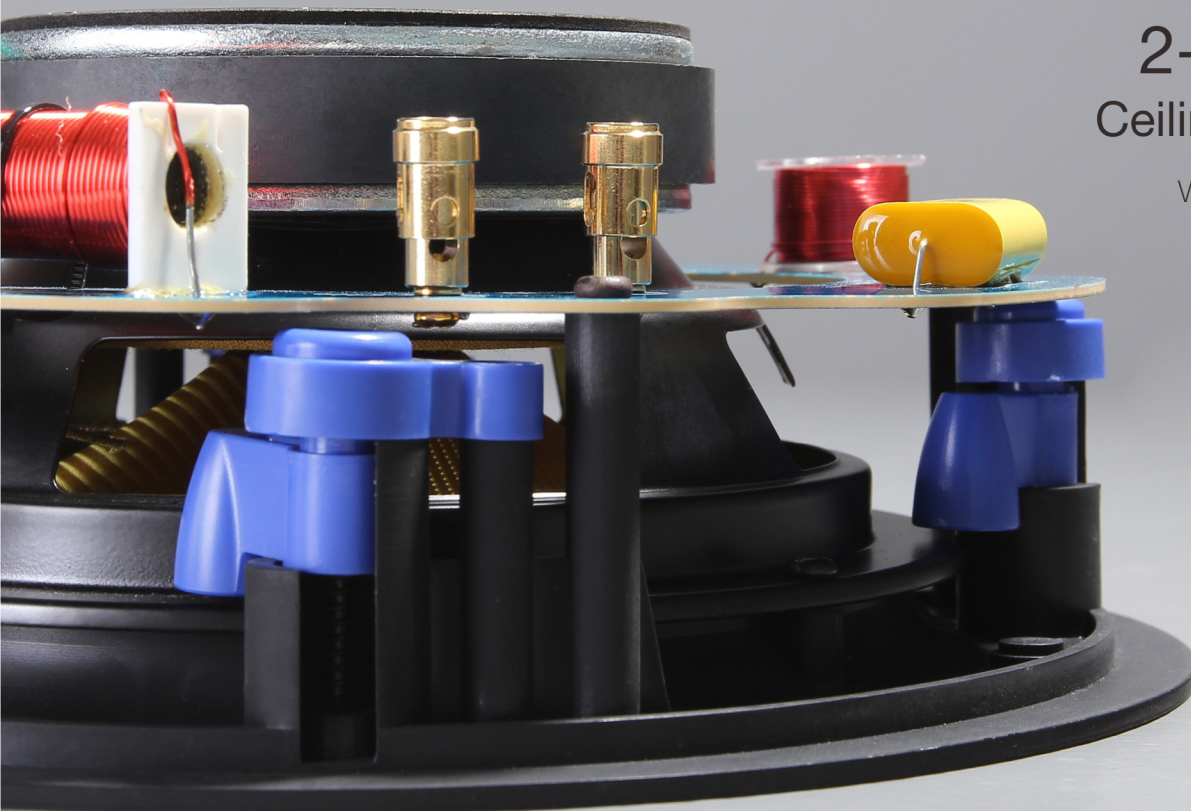


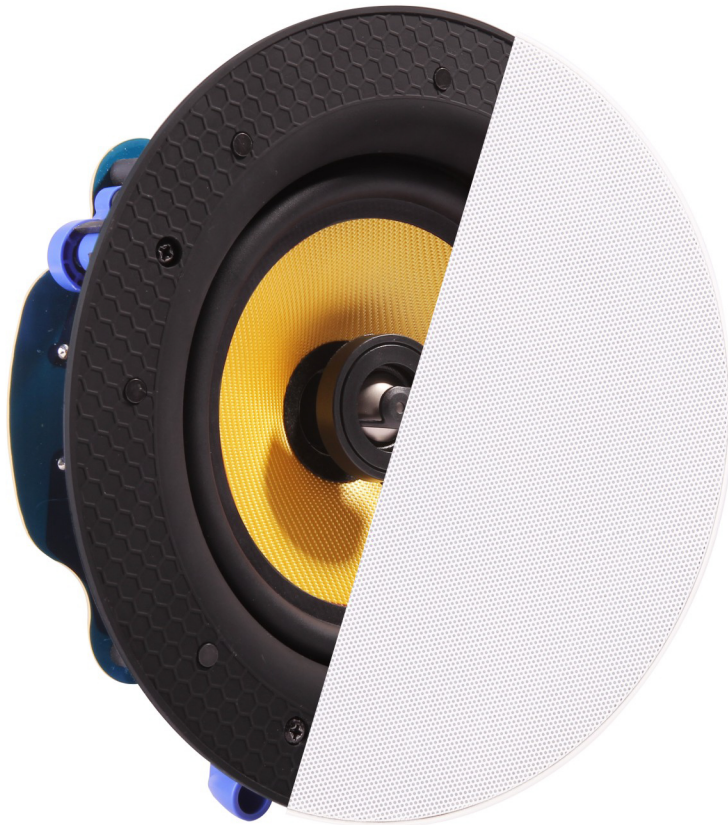


2-Way Kevlar Ceiling/Wall Speaker with Pivoting Tweeter

Designed to offer greater flexibility in terms of application while accommodating a wide range of music tastes.

FLC-8





FEATURES

- Kevlar cone offers a lifetime of listening enjoyment.
- Frameless design makes installation easy
- Micro-slim magnetic round grill offers protection
- Pivoting 0.75" Titanium dome tweeter for pristine highs
- Front accessible environment EQ for fine tuning
- Gold plated terminals and quality crossover components.

Standard Specifications

(Other configurations available)

Woofer Type	Kevlar Woven Cone
Woofer Size	8"
Tweeter Type	Titanium Dome
Tweeter Size	0.75"
Frequency Response $\pm 3\text{db}$	60 Hz-20 KHz
Efficiency	90 dB
RMS Power	80W
Nominal Impedance	8 Ohm
Product Dimensions	277x105mm (10.9"x4.1")
Cutout Dimensions	258mm (10.2")
Grill Type	Magnetic Round
Product Weight	2.04Kg

CUSTOMIZABLE OPTIONS

- Polypropylene Cone
- Square Magnetic Grill
- 1" Silk Dome Tweeter
- Commercial Transformer