



BC1 2K⁺

Battery-Powered 1-Camera Kit

Enjoy 365-day battery life along with stunning 2K⁺ footage

Used together with a base station, the BC1 2K⁺ provides hassle-free protection with premium performance – it is able to satisfy almost all your security needs with many best-in-class features. It can go anywhere around your household to cover every corner that matters to you.



2K⁺ Resolution



Up to 365 Days of Battery Life¹
(12900 mAh)



Color Night Vision



Smart Human Motion Detection



Active Defense



Customizable Voice Alerts



Two-Way Talk



Weatherproof Design



Base Station Included
(Supports MicroSD Card up to 256 GB²)

H.265

H.265 Video Compression



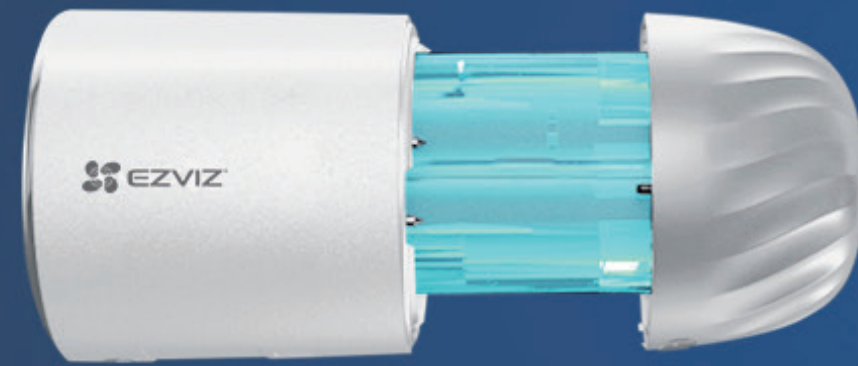
Smart Integration with Google Assistant & Amazon Alexa



Works with EZVIZ Solar Panel for Battery Charging³

365-day battery life with no strings attached

Fully charge your BC1 2K+ camera, install it in minutes, and enjoy steady performance up to a year. You may also customize the activity-trigger settings based on the usage of your camera, so as to maximize its battery life.

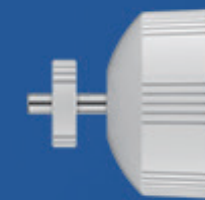


12,900 mAh

Mount it with :



**Magnetic Base for
Ultra-Mobility**



**Screw Base for Worry-
Free Fixed Installation**

Stay charged with green energy

Consider direct sunshine your new, unlimited energy source for the BC1 2K+ camera. Connect your camera to the compatible EZVIZ Solar Panel³, then there's no more climbing up and down to recharge it.





Stunning details for superior protection

A clear vision can be the deciding factor in home protection. This camera satisfies this fundamental demand with ultra-clear 2K+ video quality, and helps you see down to the tiny detail.



10-21-2021 09:41:30

Vivid night vision

Thanks to two built-in spotlights, the BC1 2K+ camera can render vivid color imaging even in pitch-black darkness. This allows you to see crucial details that would otherwise be lost.



10-21-2021 02:41:30

Color Night Vision




10-21-2021 02:41:30

Black and White Night Vision

Detect to protect, in a smarter way

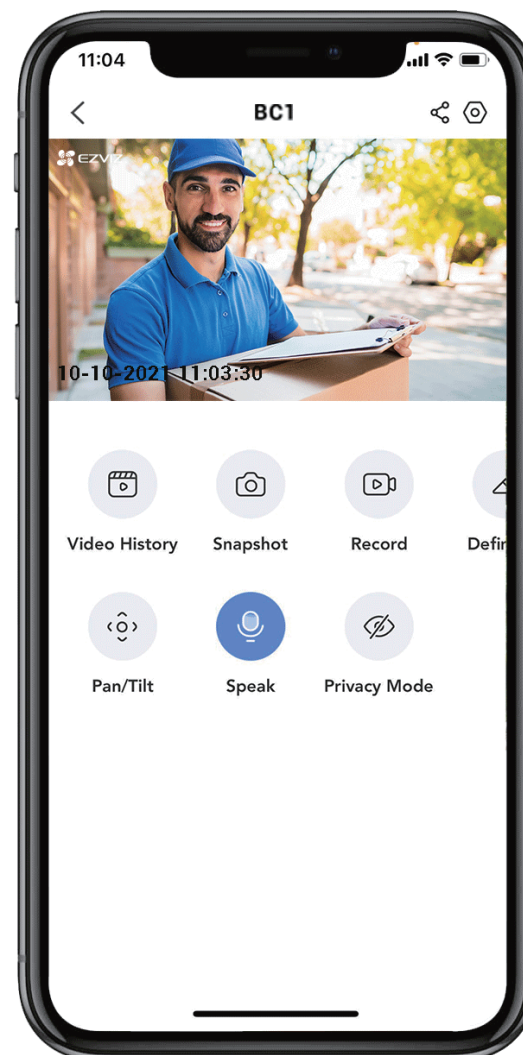
The cameras integrates a PIR sensor and the person-shape detection algorithm, thus is smart enough to alert you on moving people rather than trivial objects. It will send you mobile alerts on human activities, and can set off a siren and flash two spotlights⁴ to warn the suspicious.

 Instant Mobile Alerts

 Active Defense Function



Hello! Welcome!



Greeting can be this easy

Enjoy two-way communications by simply using your phone. Or, pre-record specific voice messages that automatically play when people are detected on camera.

*Supports recording three 10-second audio messages.

Built to last

The BC1 2K+ features a weatherproof enclosure, offering high levels of protection against dust and water and delivering long-lasting protection in even the toughest weather conditions.



Smart integration, hands-free control

Easily manage your BC1 2K+ Kit via the EZVIZ App. What's better, you can voice-enable the live viewing with *"Hey Google"* or *"Alexa"* to check what's happening on a bigger screen.



Work with the Base Station for steady performance

Operating through cable connection, the base station ensures that the BC1 2K+ cameras can enjoy a more stable internet status even at long distances, which also helps extend the cameras' battery life.



Up to 4 BC1 2K+ cameras⁵



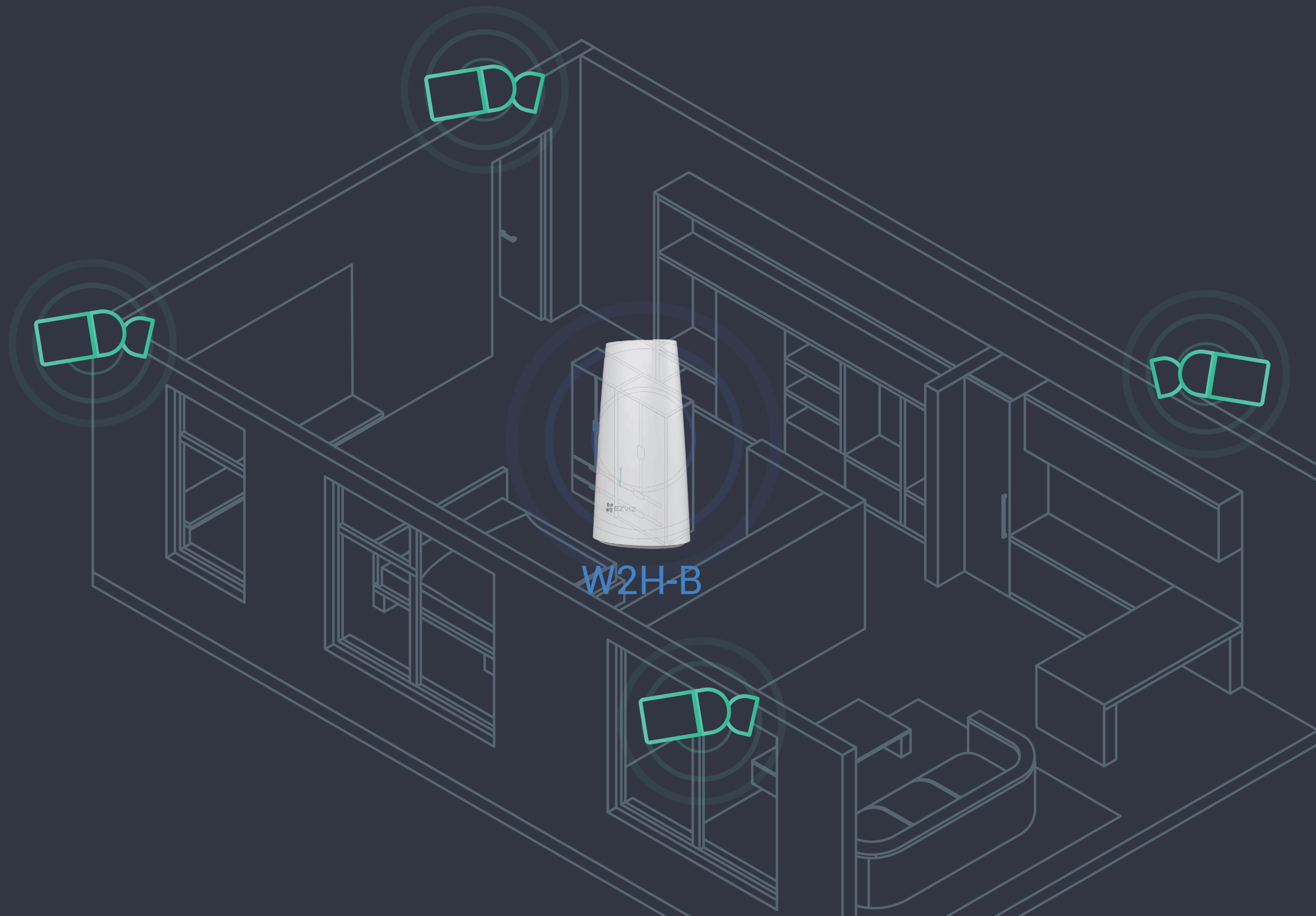
Easy pairing in seconds



Built-in 125 dB siren⁶



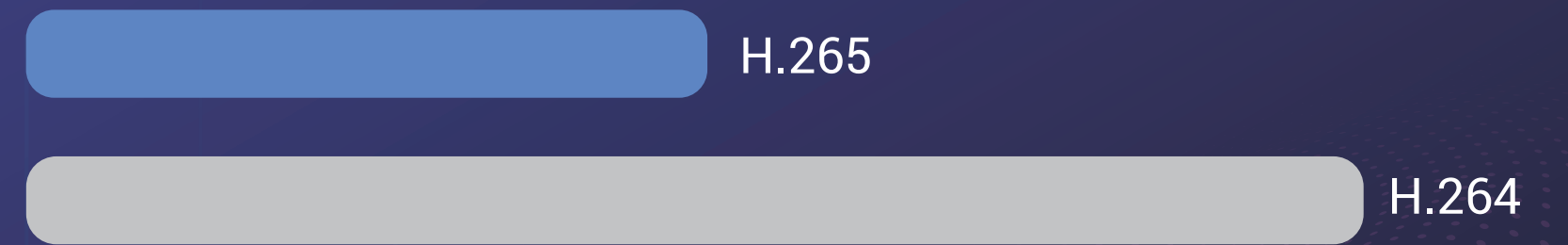
MicroSD card slot
(up to 256 GB)



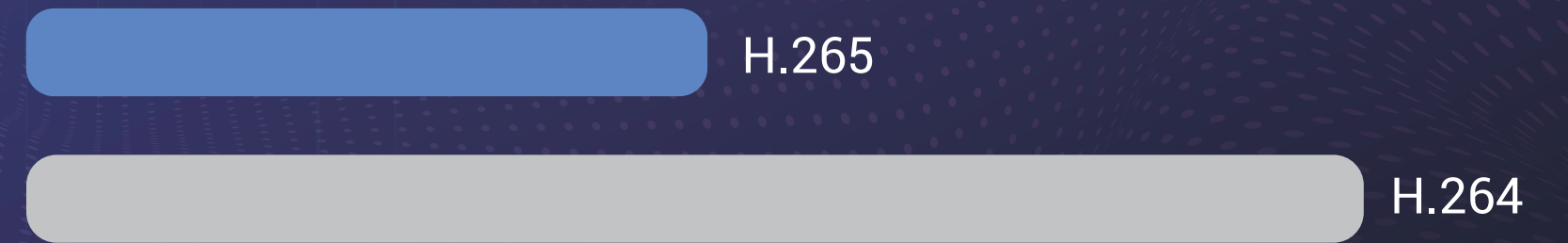
It saves money on storage and bandwidth

The camera features the advanced H.265 video compression technology, achieving better video quality with only half the bandwidth and half the storage space required by the previous H.264 video compression standard⁷.

Video Storage



Bandwidth

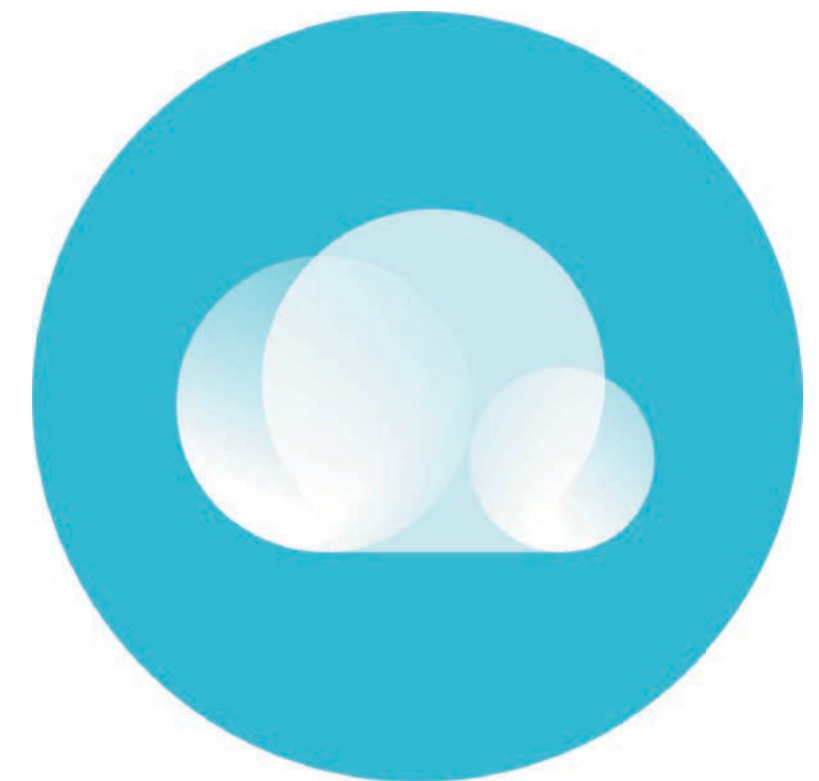


Safe, flexible storage that you can trust

Designed with a 256 GB MicroSD card slot, the Base Station lets you store videos recorded by the BC1 2K+ camera locally. This design guarantees data security in case of camera damage or loss. You can also save videos to the EZVIZ CloudPlay for extra peace of mind.



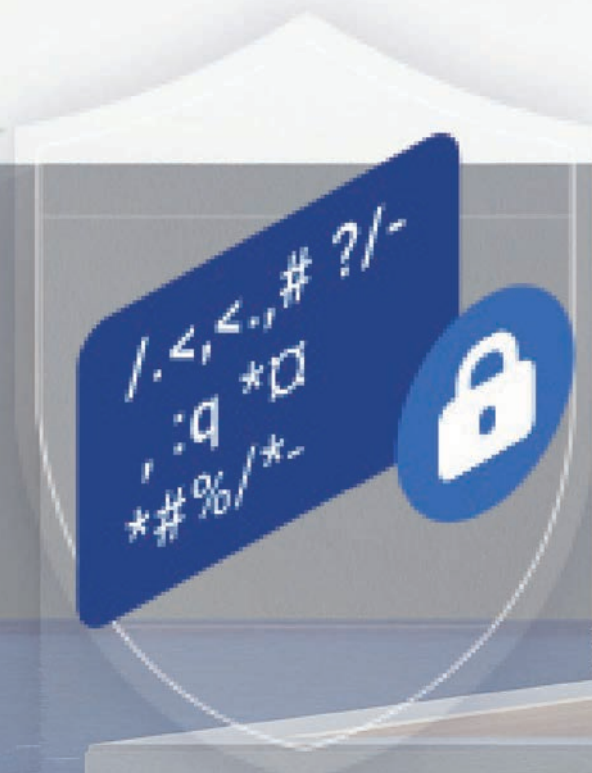
Supports MicroSD Card



Supports EZVIZ CloudPlay Storage⁸

We protect your data and privacy

Protecting your data and privacy is our highest priority. Data transmission between the camera and the EZVIZ Cloud is encrypted from end to end. Only you have the keys to decrypt your data.



AES 128-bit encryption



TLS encryption protocol



Multi-Step authentication

1 Data from EZVIZ Lab's test results under standard conditions. May vary due to environmental factors and the frequency of camera activities.

2 A local storage card must be purchased separately.

3 The solar panel is not included in the kit and please verify the product compatibility before making a purchase.

4 The spotlights will not flash when the color night vision mode is enabled.

5 The BC1 2K+ add-on cameras are most recommended to use with the kit for optimized user experience. The base station can also connect with BC1 1080p add-on cameras, which need to be upgraded to the latest software and hardware version in the device settings.

6 Data from EZVIZ Lab's test results.

7 When the 24/7 recording mode is applied, the H.265 technology can reduce the video storage space and bandwidth by 50% when compared to the H.264.

8 The cloud storage service is only available in certain markets. Please verify the availability before making a purchase.

Specifications Model CS-BC1-B1 (2K⁺)

Camera

| | |
|-----------------------|--|
| Image Sensor | 1/3" 4-Megapixel Progressive Scan CMOS Sensor |
| Shutter Speed | Self-Adaptive shutter |
| Lens | 2.8mm @ F1.6 Viewing angle: 116°(Diagonal), 100° (Horizontal) |
| Battery Capacity | 12900 mAh |
| Minimum Illumination | 0.2 Lux @ (F1.6, AGC ON), 0 Lux with IR |
| Lens Mount | M12 |
| Day & Night | IR-Cut filter with auto-switching |
| DNR | 3D DNR |
| Night Vision Distance | Up to 32 ft / 10 m |

Video & Audio

| | |
|-------------------|--|
| Max. Resolution | 2K ⁺ / 4MP, 2560 × 1440 pixels |
| Frame Rate | 15fps. Self-Adaptive during network transmission |
| Video Compression | H.265 / H.264 |
| Video Bit Rate | Ultra-HD; FHD; Hi-Def. Adaptive bit rate. |
| Audio Bit Rate | Self-Adaptive |
| Max. Bitrate | 2 Mbps |

Camera Network

| | |
|-----------------------------|--|
| Wi-Fi Standard | IEEE802.11b, 802.11g, 802.11n |
| Frequency Range | 2.4 GHz ~ 2.4835 GHz |
| Channel Bandwidth | Support 20 MHz |
| Security | 64 / 128-bit WEP, WPA / WPA2, WPA-PSK / WPA2-PSK |
| Transmission Rate | 11b: 11 Mbps, 11g: 54 Mbps, 11n: 72 Mbps |
| Wi-Fi Pairing | AP pairing |
| Protocol | EZVIZ Cloud Proprietary Protocol |
| Interface Protocol | EZVIZ Cloud Proprietary Protocol |
| Wired Network | RJ45 × 1 in Base (10 M / 100 M Adaptive Ethernet Port) |
| Minimum Network Requirement | 4 Mbps |

Storage

| | |
|---------------|--|
| Local Storage | Supports microSD card (Up to 256 GB) on base |
| Cloud Storage | Supports EZVIZ CloudPlay storage (Subscription required) |

Function

| | |
|-----------------------|------------------------------|
| Smart Alarm | Smart Human Motion Detection |
| Customized Alert Area | Supports |
| Two-Way Talk | Supports |

Specifications Model CS-BC1-B1 (2K+)

General

| | |
|-----------------------|--|
| Operating Conditions | -20 °C to 50 °C (-4 °F to 113 °F) Humidity 95% or less (non-condensing) |
| IP Grade | IP66 |
| Package Dimensions | 260 × 217 × 180 mm (10.24 × 8.54 × 7.09 inch) |
| Weight (Camera) | 385 g (13.58 oz) |
| Weight (Base) | 207 g (7.30 oz) |
| Weight (With Package) | 1304 g (46.00 oz) |

Base Station W2H-B

| | |
|-----------------------------|---|
| limit number of connections | 1 W2H-B supports up to 4 EZVIZ battery-powered cameras |
| Button | Sync button, power button, reset button. |
| Indicator | 3 RGB LED indicator, 1 network indicator |
| Network Interface | 1 RJ-45 10 / 100 Mbps Self-adaptive Ethernet WAN interface |
| Wireless Interface | Supports 2.4 G connection. The actual available channels vary according to the sales area regulations. Theoretical maximum rate is 144 Mbps at 802.11b/g/n. |

Power

| | |
|-------------------|---|
| Power Supply | Camera: DC 5V / 2A Base: DC 12V / 1A |
| Power Consumption | Max. 5W |

In the box

- BC1 2K+ Camera
- W2H-B Base Station
- Power Adapter (For base station)
- Magnetic Base
- Screw Base
- Mounting Plate
- Power Adapter (For camera)
- USB Cable
- Drill Template
- Screw Kit
- Regulatory Information
- Quick Start Guide

Certifications:

CE / FCC / WEEE / RoHS / REACH / UL

Specifications are subject to change without notice. "🌈", "EZVIZ" and other trademarks and logos are the properties of EZVIZ in various jurisdictions.

<https://www.ezvizlife.com/>