

3 PIN PLUG POWERBOARDS WITH BUILT-IN USB CHARGING

DESCRIPTION

Easily and conveniently turn outlets into 2, 4, & 6 additional socket's with DYNAMIX powerboards. Designed with 2 wide spaced outlets (A14U & A16U) to accommodate larger power adapters, plus 2x USB 2.4A rapid charging ports. These 10 amp, 2400W powerboards provide power where you need it most. Not only is the A12U a dual power board that includes 2x USB 2.4A rapid charging ports it also has a built-in phone or tablet holder tray.

FEATURES

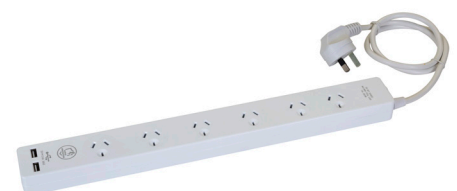
- 2,4 & 6 outlets
- Two wide spaced sockets (A14U & A16U)
- 10 Amp, 2400W
- Surge Protected (A14U & A16U), Overload Protected (A12U)
- Angled 3 Pin Plug
- Ideal for Printers, Computers, Laptops, TV's & more
- 2x USB 2.4 Rapid Charging ports (A12U)
- 2x USB 3.4 Rapid Charging ports (A14U & A16U)
- Built in phone or tablet holder tray (A12U)



A12U



A14U



A16U

| PRODUCT CODE | DESCRIPTION | USB OUTPUT | LENGTH | COLOUR |
|--------------|--|-------------|-------------|--------|
| A12U | 2-Way Outlet Powerboard, 2x USB Charger, Overload Protection | 2.4A Shared | 1m (Cord) | White |
| A14U | 4-Way Outlet Powerboard, 2x USB Charger, Surge Protection | 3.4A Shared | 0.9m (Cord) | White |
| A16U | 6-Way Outlet Powerboard, 2x USB Charger, Surge Protection | 3.4A Shared | 0.9m (Cord) | White |

ALSO AVAILABLE:

A1LA1R



Horizontal Double Adaptor, A1L- Left Hand, A1R- Right Hand, twin pack version

A14



4-Way Power Board. 2x ports are double spaced. 0.9m Power cord. Overload Protection

A16



6-Way Power Board. 2x ports are double spaced. 0.9m Power cord. Overload Protection

Please note we took the up-most care to compile the information in this datasheet. To the best of our knowledge all info provided were correct at the time of creation. Should any specs change we try to update info accordingly. Information are subject to change without notice. In the case that you find any irregularity please inform our team at contactus@dynamix.co.nz

Last updated: 21 February 2020