

## FIBRE WALL ENCLOSURES

### DESCRIPTION

Our DYNAMIX mini unloaded wall mount interconnect fibre enclosure is compact low profile & accepts 1 x MPO fibre cassette plus other accessories in the DYNAMIX FPP range of plates & accessories. FW1MP3 provides a convenient & robust convergence point for interconnecting & splicing in wall mount applications.

### FEATURES

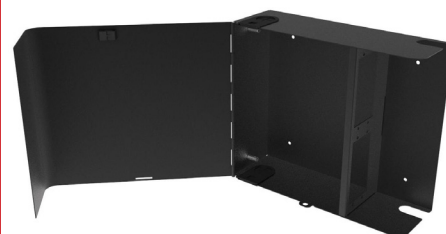
- Slot Type Supports FPP MPO cassette or adapter plates (DYNAMIX FPP series)
- RoHS, REACH and svHC
- Lockable (padlocks sold separately)
- 1 x Hinged door
- Indoor rated IP20
- FTTX deployment & enterprise network
- Indoor application
- Accepts indoor and outdoor pre-terminated cables and MTP system or splicing



FW1MP3



FW2MP3



FW4MP3

CODE	DESCRIPTION	DIMENSIONS	WEIGHT	FIBRE CAPAPCITY	SLOTS
FW1MP3	Mini Wall Mount Modular Box	330mm x 150mm x 35mm	1.75kg	Up to 24FO in LC	1
FW2MP3	Wall Mount Modular Box	330mm x 140mm x 83mm	2.5kg	Up to 48FO in LC	2
FW4MP3	Wall Mount Modular Box	330mm x 280mm x 115mm	4.0kg	Up to 96FO in LC	4

### SPECIFICATIONS

Includes	<ul style="list-style-type: none"> <li>• 24mm x 40mm Splice protectors</li> <li>• 1 x Cable gland</li> <li>• 1 x Fibre splice bridge</li> </ul> <p><i>*The box is supplied unloaded and the modules and plates are sold separately</i></p>
Mounting Type	Wall
Material	Cold rolled steel
Housing Colour	Black
Cable Management	Yes
Cable Entry Direction	Sides (top/bottom)

Please note we took the up-most care to compile the information in this datasheet. To the best of our knowledge all info provided were correct at the time of creation. Should any specs change we try to update info accordingly. Information are subject to change without notice. In the case that you find any irregularity please inform our team at [contactus@dynamix.co.nz](mailto:contactus@dynamix.co.nz)  
 Last updated: 15 September 2022