

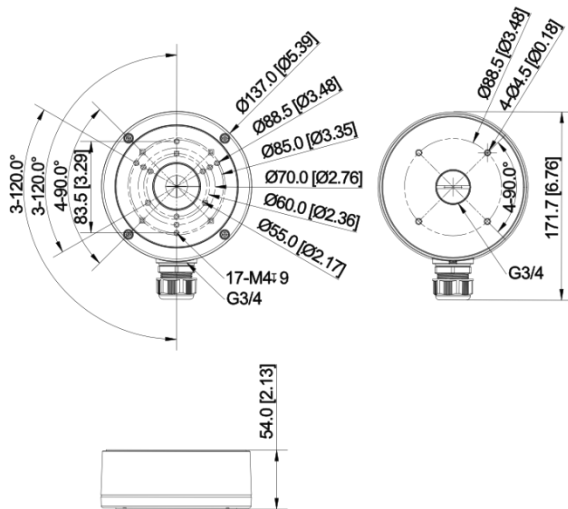
DS-1280ZJ-S

Junction Box for Dome Camera

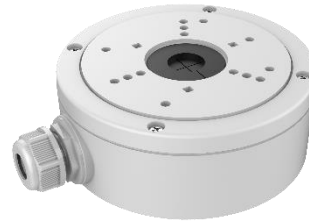
Features:

- Aluminum alloy material with surface spray treatment
- Waterproof design
- Cable hole on bracket makes the feature better

Dimension:



Unit: mm [inch]



Order Model:

DS-1280ZJ-S

Parameter:

Model	DS-1280ZJ-S
Parameters	Junction Box for Dome Camera
Appearance	Hikvision White
Material	Aluminum Alloy
Dimension	$\varnothing 137 \text{ mm} \times 164.8 \text{ mm} \times 53.4 \text{ mm}$ ($\varnothing 5.39" \times 6.49" \times 2.1"$)
Weight	621 g (1.37 lb.)

Notice:

- The bracket should be installed on flat wall
- Waterproof rubber is necessary for outdoor application
- The wall must be capable of supporting over 3 times as much as the total weight of the camera and the mount.
- The maximum load capacity of the bracket is 4.5 kg

Note: The actual bracket may vary from the picture above.