



Architectural Speakers  
2017











## HIDE YOUR SPEAKERS, NOT YOUR SOUND

KEF architectural speakers deliver accurate three dimensional sound you'd expect from the best conventional speakers – startlingly clear and breathtakingly realistic.



**KEF's passion for acoustic excellence** shines through in every model. By combining radically innovative engineering with sophisticated design technologies, the KEF architectural speakers achieves what used to be thought impossible: compact custom installation speakers that sound as compelling as an audiophile quality Hi-Fi system, no matter where you sit.

**With impeccable cosmetics,** there's a model for every application, from tiny ceiling speakers in the size of downlights to motorised super-premium home theatre speakers that glide into place at the touch of a button. All are ruggedised for harsh environments such as bathrooms or boats.

**All KEF speakers are timbre-matched,** with each other and with KEF's extensive range of home speakers, so any combination you specify for different listening areas will have the same tonal colour for a perfectly consistent soundstage.

**Fast, easy installation** has always been valued by installers. With only a few simple steps and unique design features, KEF architectural speakers can be fitted quickly, with no special skills. With only a few simple steps, KEF architectural speakers can be fitted quickly with no special skills needed. Once the hole is cut and the cable run, the area is soon filled with great high definition sound.

## OBSESSED WITH HIGH RESOLUTION

KEF, one of the originators of British Hi-Fi sound, has more than 55 years of pioneering award winners from professional studio monitors to the legendary Reference Series and the recent ground-breaking MUON, BLADE and LS50.

Every KEF speaker, large or small, epitomises the seamless integration of innovative engineering and outstanding design.

Technology leadership has always been what sets KEF's installed systems apart, ever since our revolutionary Motorised and Soundlight models. Today, you can choose from a superlative range of whole house solutions to suit any space, large or small, outside as well as in. Discreet in appearance, easy to install and engineered to last, what they all share is best-in-class acoustic performance. And that's the real difference - with KEF architectural speakers, everyone gets to enjoy uncompromised audiophile quality sound.



## FEATURES AND TECHNOLOGIES

Whatever your budget, you'll find that the clarity, depth and sheer realism of the sound you experience with KEF architectural speakers that is enhanced by technologies found nowhere else.



**Uni-Q driver array** - KEF's patented Uni-Q technology places the tweeter in the acoustic centre of the bass/midrange cone so that both act as a single source that disperses the sound widely and evenly over a large area. By eliminating the 'sweet spot' restrictions of conventional speakers, this gives you complete freedom of positioning.



**Marine Grade Construction** - All KEF architectural speakers with UTB trim are built "Marine Grade" with grilles plated and powder-coated by a proprietary process, moisture-resistant fixings, UV protected plastics, and other special materials. With IP64 certification, they withstand harsh, humid, and salty spray environments and are designed to be used in such locations as bathrooms, near pools, beside the ocean or on your yacht.



**Tangerine waveguide** - As well as protecting the driver, this enhances Uni-Q's exceptionally wide dispersion characteristics.



**Magnetic assembly** - Grilles are retained by a powerful magnetic circuit for installation in seconds.

## EXTREME HOME THEATRE



For the ultimate custom installed home cinema, the formidable new Ci-REFERENCE and Ci-R Series have the jaw-dropping acoustic capabilities of the classic KEF floorstander it's named after, with all the drama and emotional intensity of full theatre sound quality. A complete system certified to THX Ultra2/Select2 standards, the Ci-REFERENCE and Ci-R Series, each consists of two powerful in-ceiling speakers that can be combined with one of four in-wall models and a choice of two sensational new powered subwoofer configurations. Its towering performance sets a new standard for custom installed speakers.

## EXTREMELY LOW PROFILE



Ci160TR



Ci160TS

With its patented ultra-low profile speaker driver, the revolutionary Ci-T Series fits snugly into even the narrowest voids while delivering all the lavishly detailed and evenly dispersed imagery of KEF's latest tangerine waveguide technology. Comprised of a Round model and a Square model requiring less than 36mm of mounting depth, and a revolutionary 200mm sub-woofer that needs 59mm of depth, the Ci-T Series allows you to install a speaker that delivers full audiophile quality sound even when mounting space is at a premium. As easy to fit as any other KEF architectural speaker, and an equally accomplished sonic performer, it's another example of KEF innovation benefiting the installer as much as the listener.











## INSTALLED SUBWOOFERS



If you want your bass to be heard but not seen, KEF offers a wide selection of installed subwoofers with incredible sonic performance whilst remaining visually discreet. The foundation of the range, the powerful KASA500 amplifier (250Wx2) featuring selectable customized equalization and compression limiting, is designed to maximize the performance of each KEF subwoofer option which includes three superlative subwoofers: The Ci200Qsb-THX with a massive 8inch driver; the Ci3160RLb-THX with three lighting fast 6.5inch woofers on a rigid aluminum baffle, and the svelte Ci200TRb that requires only 59mm of mounting depth.



Ci3160RLb-THX

Not only do these subwoofers provide a perfect visual match to our Extreme Theatre speakers, they also perfectly enhance the sonic capabilities of the entire KEF line, that provides you a true high performance discrete theatre system. Refined yet gutsy, two Ci3160RLb-THX, or four of the Ci200Qsb-THX powered by the KASA500 meet THX Select2 standards; double that to achieve THX Ultra2. In passive mode, the Ci200TRb and Ci200Qsb-THX can be used with a stereo amplifier to provide the bass response of an 8inch speaker for a smaller in-wall or in-ceiling mounting.



Ci200TRb-THX



Ci200Qsb-THX



KASA500 Amplifier

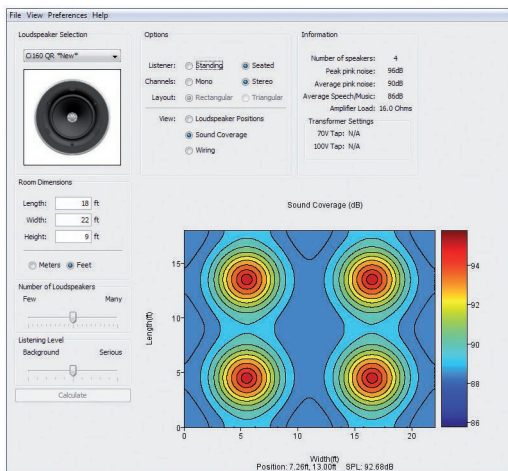




# Ci SOFTWARE

Simple to use, with pull-down menus and sliders to define the room size, desired volume and coverage pattern, the KEF architectural speaker placement software generates optimum speaker locations, wiring diagrams and sound coverage topography to help you determine the right number of speakers for the area concerned.

Download at:  
[international.kef.com/ci\\_software](http://international.kef.com/ci_software)



KEF.COM



SCAN TO LEARN MORE

PM-C165-EN-TX-17

